



# Poly Suga<sup>®</sup>Nate 100P NC

Naturally-Derived High-Foaming Surfactant

**INCI** Sodium Hydroxypropylsulfonate Decylglucoside Crosspolymer  
**CAS** 2718174-75-3 PATENT: # 7,507,399  
**LISTINGS** US (Cosmetic Use Only), Canada (DSL/NDL), EU (REACH – Monomers Registered)

**Poly Suga<sup>®</sup>Nate 100P NC** is a high foaming sulfonated surfactant based on a naturally-derived alkyl polyglucoside derivative. Poly Suga<sup>®</sup>Nate 100P NC offers good emulsification, mildness to the skin, and excellent lime soap dispersion to give the formulator maximum flexibility in the preparation of light and heavy-duty cleaners. Poly Suga<sup>®</sup>Nate 100P NC can be used in dishwashing liquids that feature outstanding grease emulsification, mildness to the hands, and excellent foam stability. Poly Suga<sup>®</sup>Nate 100P NC exhibits superior cleaning in very hard water, reducing the need for expensive builder in the formulation. It is also suitable for use in acidic formulations such as those containing glycolic or  $\alpha$ -hydroxy acids. The stability of Poly Suga<sup>®</sup>Nate 100P NC at any pH makes it desirable in many formulations for industrial, institutional and household use.

## BENEFITS

- Naturally derived
- Extremely mild to skin and eyes
- Biodegradable
- Builds wet, dense, stable foam
- Excellent wetting properties
- Stable over broad pH range
- Excellent lime soap dispersion
- 1,4-Dioxane-free
- Excellent emulsification
- Compatible with other surfactants
- Excellent hydrotoping properties
- Safe for the environment
- Safe for humans

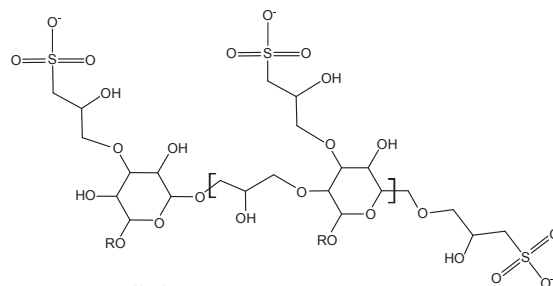
## APPLICATIONS

- Carpet cleaners
- Hard surface cleaners
- Dish washing products
- Hand soaps
- Toilet bowl cleaners
- Hand wipes



## TYPICAL PROPERTIES / STRUCTURE

Appearance (25°C)	Clear liquid
pH (10% Solution)	7.0
% Solids	40.0
Color, Gardner '98	4 Max.
Ross Miles Foam (1%, 25°C, tap water), mm	
Immediate	165
1 minute	155
5 minutes	150
Draves Wetting (1% active), sec.	5.0



## SKIN IRRITATION TESTING

### • Acute Skin Irritation

48 Hour Occlusive skin patch test: On human volunteers - 53 Test Subjects: **no visible skin reaction, no potential for dermal irritation.**

Poly Suga<sup>®</sup>Nate 100P NC is "Derived Natural" with a Natural Origin Index of 1.00 in accordance with ISO 16128 guideline.

## STORAGE / HANDLING

Poly Suga®Nate 100P NC should be stored in closed containers. Frozen material may be thawed in a warm room, venting drums while warming. Shipped in 55 gallon poly drums (net weight 450 lb/204.1 kg). Typical shelf life is 12 months from date of manufacture. Safety Data Sheets may be found at [www.colonialchem.com](http://www.colonialchem.com).



**Colonial Chemical, Inc.**

225 Colonial Drive • South Pittsburg, TN 37380  
Phone: 423-837-8800 • Fax: 423-837-3888

[www.colonialchem.com](http://www.colonialchem.com)

*Innovative Specialty Surfactants*